

LINE CLEARANCE

Policy

PURPOSE

To communicate to customers the guidelines established to maintain the availability of utilities in a safe, reliable and cost effective manner.

SCOPE

This policy enables Memphis Light, Gas and Water Division to establish guidelines to ensure its customers of reliable service and to demonstrate that each customer will be viewed in a unique, but consistent manner.

RESPONSIBILITY

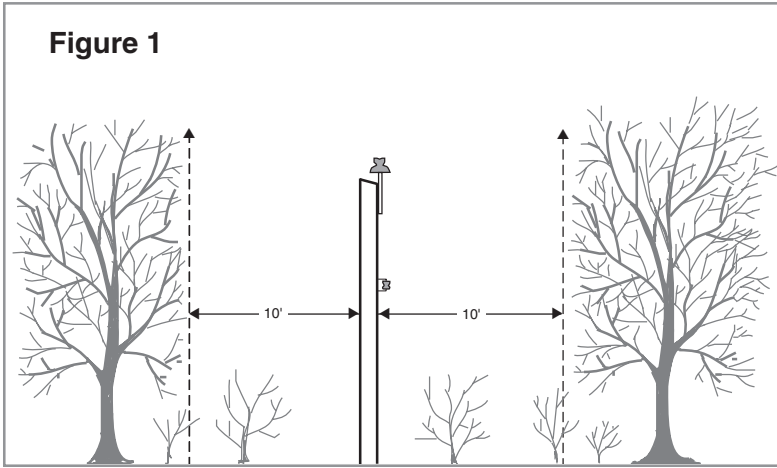
The ownership of this activity resides with the Line Clearance area of MLGW's Distribution Support department. This policy is in accordance with the 1992 Shelby County Tree Trimming Ordinance #93 and the current National Electric Safety Code. The Supervisor of Natural Resource Management or the Division's Forester is responsible for administering MLGW's line clearance policy.

**If you have questions concerning
MLGW's Line Clearance Policies,
call 320-1438.**



NEW CONSTRUCTION

Figure 1

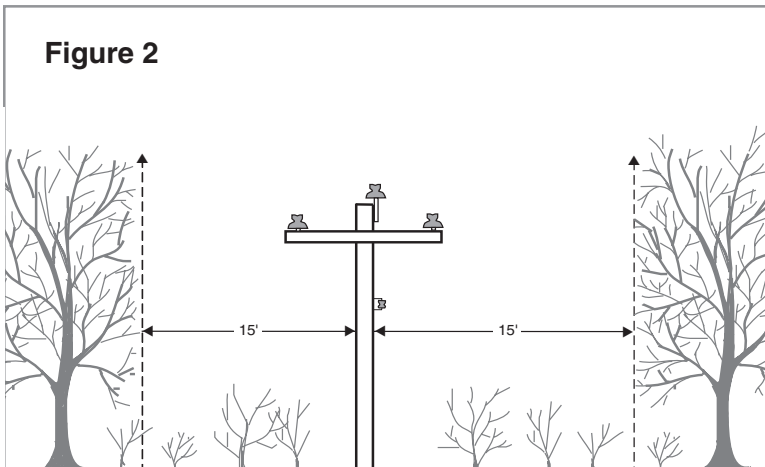


A. Single Phase Line and Secondary Line Extensions

(See Figure 1)

1. All trees will be cut down and underbrush cleared even with the surface of the ground a distance of 10 feet horizontally from each side of the center line of the proposed pole line, creating a clear corridor 20 feet wide.
2. All trees outside the above mentioned 20 foot wide corridor, the branches of which extend into the corridor, will be side trimmed to maintain a constant 10 foot horizontal clearance on each side of the proposed pole line and the pole line projected upward, further creating a 20 foot wide clear corridor through the ceiling of the tree canopy.

Figure 2



B. Three Phase Line Extensions

(See Figure 2)

1. All trees will be cut down and underbrush cleared even with the surface of the ground a distance of 15 feet horizontally from each side of the center line of the proposed pole line, creating a clear corridor 30 feet wide.
2. All trees outside the above mentioned 30 foot wide corridor, the branches of which extend into the corridor, will be side trimmed to maintain a constant 15 foot horizontal clearance on each side of the proposed pole line and the pole line projected upward, further creating a 30 foot wide clear corridor through the ceiling of the tree canopy.

C. Overhead Service

1. All trees will be trimmed to create a horizontal and vertical distance of 5 feet from a service line.

D. Customer Tree Trimming:

1. Customers will be allowed to do their own tree trimming in accordance with the guidelines contained herein.
2. MLGW will be responsible for an initial and a final inspection of a customer's tree trimming. Any additional inspections may be at the customer's expense.

NOTE: Customer Responsibility

It will be the customer's responsibility to install corner stakes or otherwise define property lines as necessary for MLGW's Line Clearance area to complete its work.



EXISTING FACILITIES

Figure 3

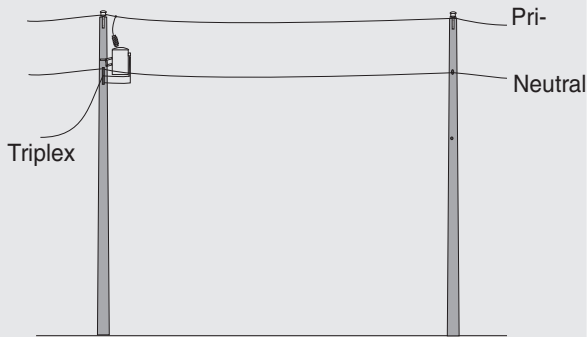


Figure 4

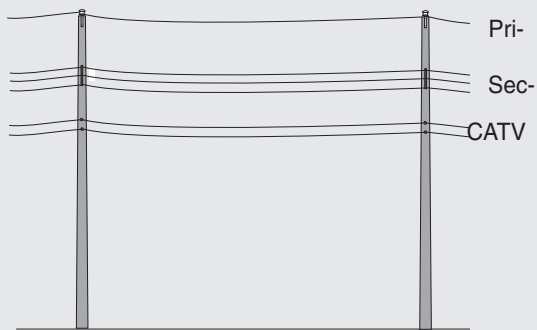


Figure 5

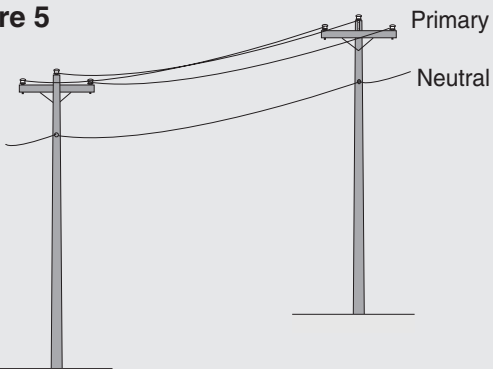
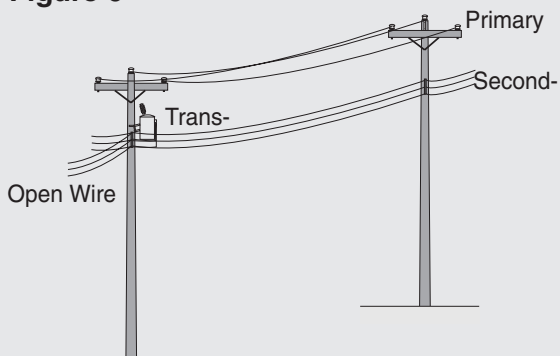


Figure 6



A. Clearance for Single Phase Lines

(See Figures 3 and 4)

1. All trees will be side trimmed a minimum of 10 feet horizontally from each side of the center pole line, creating a clear corridor a minimum of 20 feet wide projecting upwards through the ceiling of the tree canopy.
2. All established trees located within the 20 foot corridor (10 feet each side of pole line) will be side trimmed, topped or removed as determined by MLGW's Line Clearance area.
3. All voluntary, fast growing trees, less than 8 inches DBH*, located within a 10 foot corridor (5 feet each side of pole line) may be removed.

B. Clearance for Three Phase Lines

(See Figures 5 and 6)

1. All trees will be side trimmed a minimum of 15 feet horizontally from each side of the center pole line, creating a clear corridor a minimum of 30 feet wide projecting upwards through the ceiling of the tree canopy. *(See Figure 2)*
2. All established trees located within the 30 foot corridor (15 feet each side of pole line) will be side trimmed, topped or removed as determined by MLGW's Line Clearance area.
3. All voluntary, fast growing trees, less than 8 inches DBH*, located within the 10 foot corridor (5 feet each side of pole line) may be removed.

C. Clearance for Secondary Lines

(See Figures 4 and 6)

1. All tree limbs within five feet of secondary lines will be trimmed to nearest lateral.
2. MLGW will not remove established trees for secondary lines.

D. Clearance for Services

(See Figures 3 and 6)

1. All tree limbs will be cut to obtain a clearance distance of three feet on all open-wire and wrapped services.
2. MLGW will not remove established trees for service wires.

EXISTING FACILITIES

E. Clearance for Street Light Lines

1. All tree limbs will be cut to obtain a clearance distance of five feet on all street light wires (open-wire and wrapped).
2. All tree limbs will be cut to obtain a clearance distance of five feet on all street lights and street light poles.

F. Tree Trimming Cycle

1. MLGW's goal is to maintain an efficient trimming cycle working from west to east covering the entire county.
2. All tree removals (including trade-a-trees) will be done while crews are performing maintenance trimming in a scheduled area.

G. Tree Replacement

1. Trade-a-Tree Program: If an MLGW representative decides a tree is damaged or unsightly as a result of necessary utility trimming, MLGW will remove that tree with the property owner's permission. In certain cases, the tree can be replaced with another tree with low maturity height. MLGW replacement trees include the bradford pear, Japanese maple, crape myrtle, photina, foster holly and weeping privet hedge. For more information about the tree replacement program, call 320-1438.
2. Tree removal and replacement will be done during regular trimming in that area.

H. Notification of Customers

Customers will be notified of line clearance schedules through:

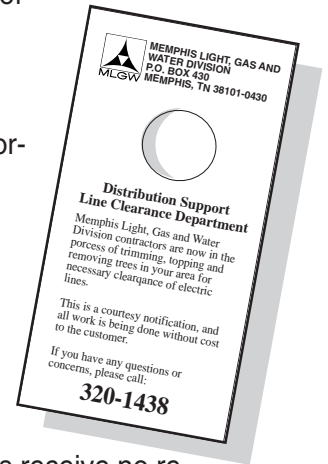
- utility bill inserts notices;
- notices mailed to neighborhood associations;
- courtesy notification
- personal contact

Crews working in areas will leave a courtesy notification four to five days ahead of anticipated trimming maintenance. If crews receive no reply or communication from customer, they will proceed with tree trimming.

In emergencies, customers may not be notified.

I. Limitation

1. This policy is administered in accordance with the 1992 Shelby County Tree Trimming Ordinance #93 and the current National Electric Safety Code, and no part of the policy contained herein shall be construed to conflict or expand thereon.
2. The employees of the Line Clearance area or their assigns shall have the right of ingress/egress to MLGW facilities for the purpose of tree trimming maintenance.



DEFINITIONS

Corridor - A passageway or opening through which the utility lines run.

DBH - Diameter Breast Height - Diameter of the tree measured at 4 1/2 feet above the ground.

Established Trees - Trees that are intentionally planted or trees over eight inches in diameter that have grown naturally.

Lateral - A smaller branch 1/3 the size of the branch being cut.

Primary Line - A high voltage wire located at the top of pole. It carries 12,000 to 23,000 volts.

Secondary Line - Low voltage wires (usually three wires stacked vertically). It carries up to 220 volts and is located below the primary, if primary is present, or located at top of pole if primary is not present.

Service - A low voltage line that runs directly to the house. Two to three wires wrapped together or stacked vertically.

Single-Phase - Single primary line located at top of pole.

Three-Phase - Three primary lines located at top of pole usually in a horizontal position.

Tree Canopy - The crown of the tree. For the purpose of this policy, it is the part of the tree that overhangs the corridor.

Underbrush - Voluntary trees less than four inches DBH.

Voluntary Trees - Trees under eight inches in diameter that have grown naturally (not intentionally planted).

