



MLGW

Weaver-Gill Natural Gas Pipeline Project

Board Update

Chandrika Rosser

VP, Gas & Water Engineering & Operations

August 6, 2025

18" XHP Pipeline Replacements from Weaver Gate Station to Gill Road

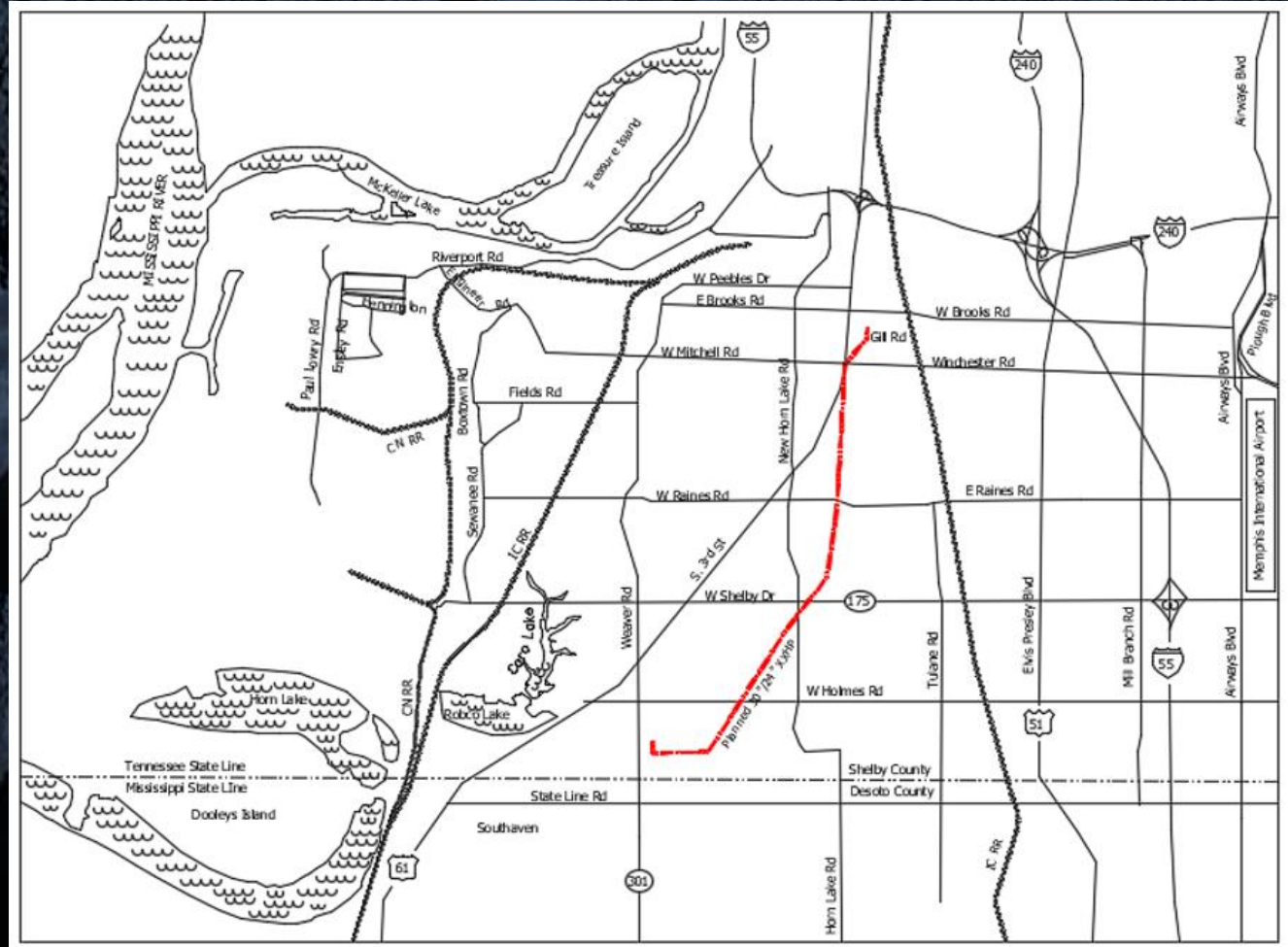
Justification and Benefits

- Replaces 96 and 85-year-old pipelines
- Enhanced safety
- Improved reliability
- Ensures adherence to Federal and State regulations

Contract 12500 - 18" XHP Pipeline Replacements from Weaver Gate Station to Gill Road

Overview:

- 30"/24" STEEL XHP PIPELINE ROUTE
- 5.4 MILES – FROM WEAVER GATE STATION to GILL ROAD
- 300 PSIG MAOP
- RE-CLASSIFICATION FROM TRANSMISSION TO HIGH-PRESSURE DISTRIBUTION
- TIE-INS TO FOUR (4) REGULATOR STATIONS ALONG ROUTE



18" XHP Pipeline Replacements from Weaver Gate Station to Gill Road

August Construction Update:

- No gas service to customers has been interrupted.
- Construction is **approximately 60% complete**.
- Every area on the 5.4-mile route has been touched by construction.
- 100% of material has been received.
- Construction still on track for October 1 completion.

18" XHP Pipeline Replacements from Weaver Gate Station to Gill Road

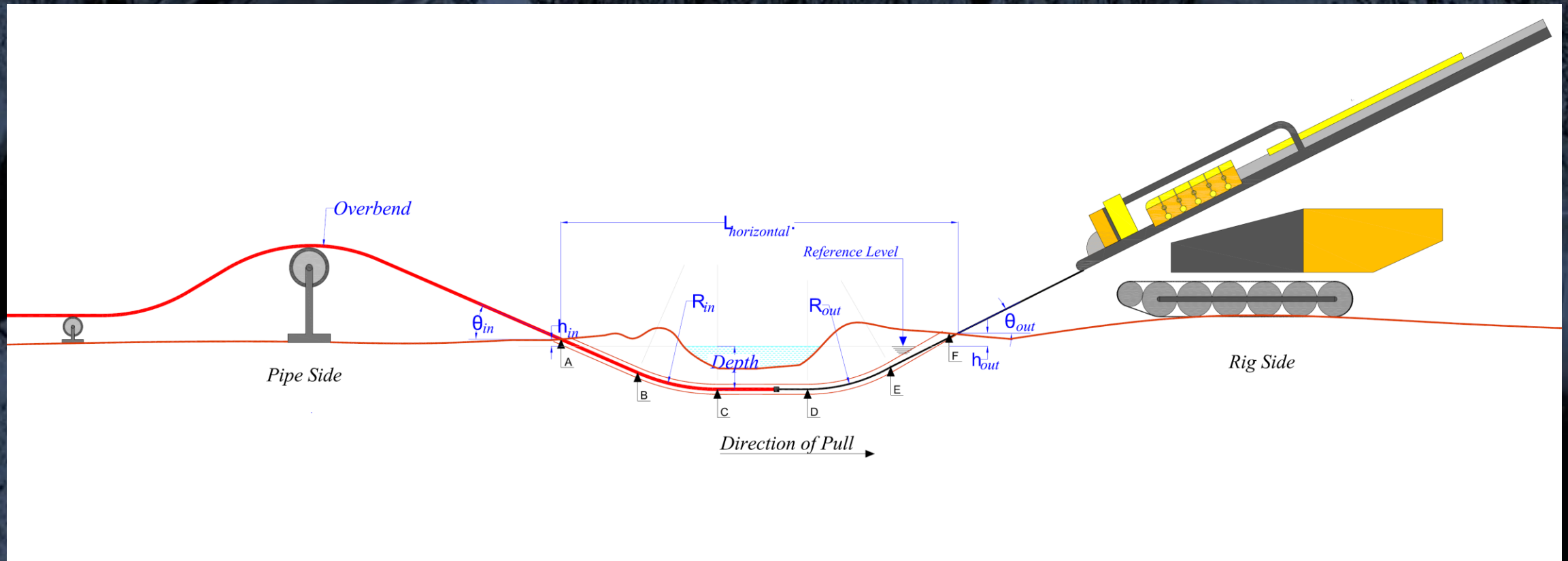
Projected Project Cost: \$37,303,348.39

Changes in Scope: \$5,929,830.94 – Not to exceed

- On site design changes required to minimize customer impact:
 - Increased bore lengths and reduced trenching.
 - Required sections of existing pipe to be removed vs. abandoned in-place. Allowed for use of existing easements to install the new pipe and mitigate impact to customers.
- Additional wooden mats were required to support heavy equipment in areas impacted by this year's rain events.

18" XHP Pipeline Replacements from Weaver Gate Station to Gill Road

What is a bore?



18" XHP Pipeline Replacements from Weaver Gate Station to Gill Road



18" XHP Pipeline Replacements from Weaver Gate Station to Gill Road

Construction Conditions Bore Equipment



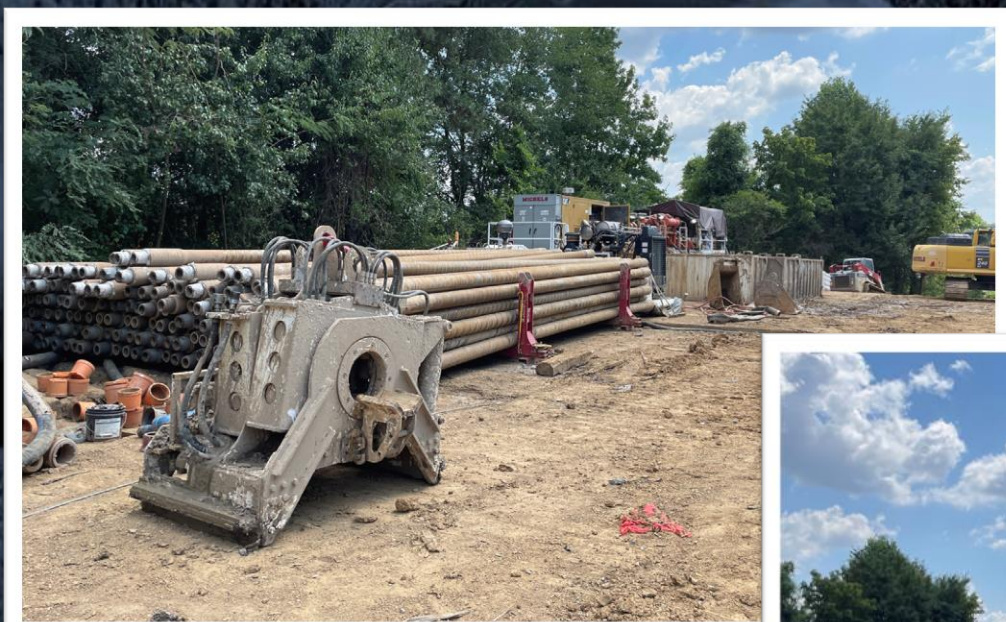
18" XHP Pipeline Replacements from Weaver Gate Station to Gill Road

Construction Conditions Bore Equipment



18" XHP Pipeline Replacements from Weaver Gate Station to Gill Road

Construction Conditions Bore Equipment



18" XHP Pipeline Replacements from Weaver Gate Station to Gill Road

Construction Conditions

Proximity to businesses and homes



18" XHP Pipeline Replacements from Weaver Gate Station to Gill Road

Construction Conditions
Proximity to homes



18" XHP Pipeline Replacements from Weaver Gate Station to Gill Road

Construction Conditions

Increased bore lengths

These properties would have be impacted by the bore equipment and operations



18" XHP Pipeline Replacements from Weaver Gate Station to Gill Road

Construction Conditions

Combined 3 separate bores into 1 long Bore
Minimizing customer impacts



18" XHP Pipeline Replacements from Weaver Gate Station to Gill Road

Construction Conditions

Combined 3 separate bores into 1 long Bore

These properties would have be impacted by the bore equipment and operations



18" XHP Pipeline Replacements from Weaver Gate Station to Gill Road

Construction Conditions

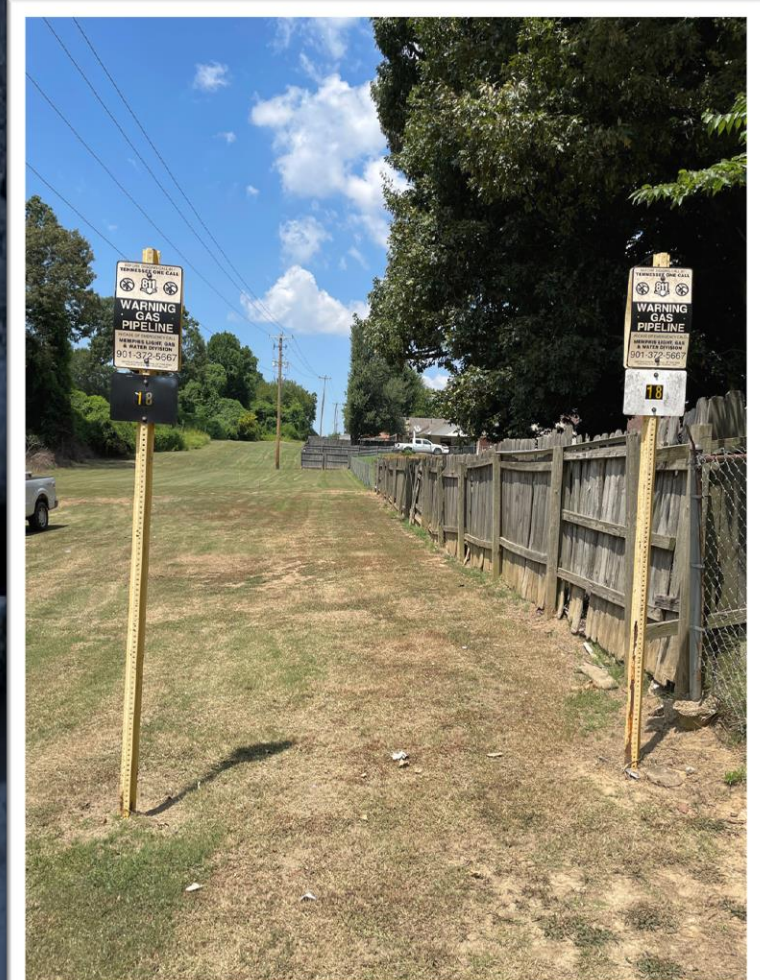
Combined bores

Minimizing customer impacts



18" XHP Pipeline Replacements from Weaver Gate Station to Gill Road

Construction Conditions
Combined bores



18" XHP Pipeline Replacements from Weaver Gate Station to Gill Road

Construction Conditions



18" XHP Pipeline Replacements from Weaver Gate Station to Gill Road

Construction Conditions

Additional wooden mats required for equipment



18" XHP Pipeline Replacements from Weaver Gate Station to Gill Road

Construction Conditions:

Abandoned Pipe Removal – Asbestos coating abatement at Emerald Way



18" XHP Pipeline Replacements from Weaver Gate Station to Gill Road

Communication to impacted customers / general public:

1. Letters to impacted customers
2. Door hangers when working in the neighborhood
3. Community Meetings
4. Press releases
5. Social Media Posts
6. Website featuring map and FAQ
7. Regular Board of Commissioner and City Council progress updates
8. Keeping employees apprised through internal publications/applications



18" XHP Pipeline Replacements from Weaver Gate Station to Gill Road

