



Energy Edge

A NEWSLETTER FOR MEMPHIS LIGHT, GAS AND WATER DIVISION GENERAL POWER CUSTOMERS
MAY 2023

MLGW to host Driving EV Leadership workshop for fleet operators

Businesses, organizations, school districts and local governments interested in adding electric vehicles to their fleet are invited to the Driving EV Leadership workshop on May 25 at Shelby Farms Park FedEx Event Center, 415 Great View Drive East, Memphis.

Speakers from organizations across Tennessee will discuss:

- EV Preparations at the State and Local Levels
- Current and Upcoming Federal, State and Local Incentives to Aid EV Adoption
- Planning for EVs in Your Fleet

The interactive event is hosted by MLGW, Drive Electric Tennessee and East Tennessee Clean Fuels. Attendee feedback through real-time polling and question & answer periods will focus discussions on topics of greatest interest and aid sponsors in developing future initiatives.

Networking begins at 8 a.m., with welcoming remarks from MLGW President & CEO Doug McGowen at 8:30 a.m. The event will conclude by noon, with an optional EV Car Show afterward. The workshop is free, but attendees must register in advance at <https://www.eventbrite.com/e/mlgw-driving-ev-leadership-event-tickets-627304503657> Seating is limited so register early.

Earn larger incentives through EnergyRight for Business & Industry

Joint MLGW/TVA program encourages customers to increase efficiency levels when replacing equipment

Financial incentives under the EnergyRight program changed effective March 1, making it easier for businesses and organizations to reach energy goals.

Changes include:

- Increasing HVAC incentive from \$40 per ton to \$80 per ton under the energy efficiency option.
- Increasing the indoor LED lighting incentive from \$0.04 per kWh to \$0.08 per kWh.
- Removing the annual maximum incentive amount of \$150,000 per site.

In this issue:

Driving EV Leadership workshop slated for May 25 1

EnergyRight for Business & Industry program increases incentives 1

CY2022 carbon data published for Scope 2 reporting 2

MLGW releases 2022 Water Quality Report 3

Electric Rate Fuel Cost Adjustment (FCA)

TVA Rate Class	MLGW Rate Code	FCA Amount
GSA, Part 1	E-2	\$0.02754
GSA, Part 2	E-2	\$0.02764
GSA, Part 3	E-2	\$0.02726
Residential	E-1	\$0.02776
Outdoor Lighting	E-3	\$0.02542

Monthly adjustment in \$/kWh to all firm kWh, beginning with meters read on or after 5/3/2023.



Important Contact Information

Business Solutions Center:

Monday-Friday

8:00am-4:30pm Central

Phone: 901-528-4270

Fax: 901-528-4547

E-mail: mlgwbsc@mlgw.org

Emergency: 901-528-4465

Outage: 901-544-6500

Maintenance,
Trouble and Gas

Pilot Safety: 901-820-7878

VIEW YOUR BILL ONLINE AT www.mlgw.com

- Increasing the annual maximum incentive per *company* from \$750,000 to \$1 million.

Except for HVAC in instances of equipment failure, all projects require pre-approval from TVA prior to removing or installing equipment. (Emergency HVAC projects are eligible, provided applications are submitted within 60 days of the equipment installation, based on required invoices and specifications sheets to be uploaded with the online application.) Eligible applications must be submitted on or after March 1 to qualify for the new incentives.

Customers must utilize a member of the EnergyRight Preferred Partners Network (PPN) for each project. Customers who have in-house staff to handle lighting equipment installations must use a lighting supplier on the PPN list. To find a contractor on the PPN and view a full list of energy upgrade incentives available to business and industrial customers, visit www.EnergyRight.com

Some facility upgrades may qualify for federal tax incentives through the Energy-Efficient Commercial Buildings Tax Deduction, which was reinstated by federal legislation in 2020 and made permanent. The Inflation Reduction Act of 2022 then modified the deduction, changed the efficiency requirements, added a bonus deduction value for projects that meet certain prevailing wage and apprenticeship requirements and established a mechanism for participation of buildings owned by tax-exempt entities. Consult your tax professional and watch for 2023 updates to these websites as the IRS issues guidance: https://www.energystar.gov/about/federal_tax_credits/tax_credits_commercial_buildings and <https://programs.dsireusa.org/system/program/detail/1271/energy-efficient-commercial-buildings-tax-deduction>

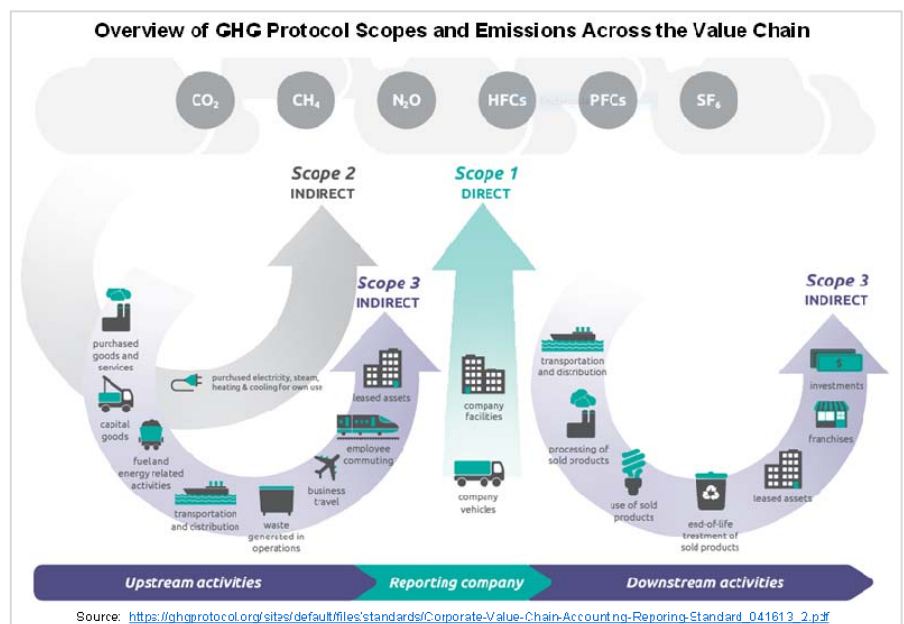
New data available for customers who calculate carbon emissions

Carbon dioxide (CO₂) emission data associated with calendar year 2022 electricity consumption has been released. Large commercial and industrial customers on time-based electric rates received a personalized report from MLGW, while customers on the General Power Rate (which represents most businesses and organizations) can access current and historic data online at <https://www.mlgw.com/community/carbonallocation>

A growing number of organizations calculate Scope 2 emissions, which includes indirect CO₂ emissions associated with the generation of electricity consumed at a facility. It benefits customers to use the MLGW/TVA CO₂ value, which is substantially lower than current EPA eGRID national or regional data commonly used as a default when utility-specific data is not available.

Calculating Scope 2 CO₂ emissions is an easy first step for companies and organizations just beginning to create sustainability or carbon reduction goals. The CO₂ reports and website include opportunities for decreasing facilities' Scope 1 and 2 emissions, including energy efficiency upgrades, renewable energy generation or Renewable Energy Certificate (RECs) purchases and converting internal combustion engine fleet vehicles to electric.

Remember to share the information with staff responsible for carbon reporting.

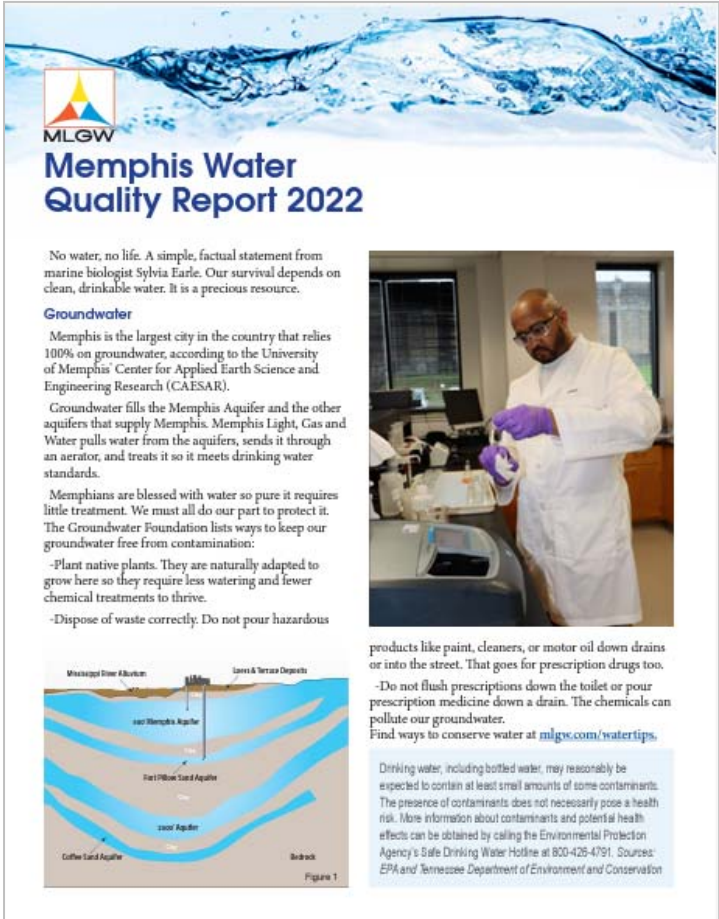


MLGW releases 2022 Water Quality Report

MLGW's 2022 Water Quality Report is now online. As in prior years, Memphis water met or exceeded state and federal standards. This Water Quality Report guides consumers through required monitoring results and information on common contaminants that can be found in drinking water, including bottled water.

Memphis is the largest city in the country that relies 100% on groundwater, according to the University of Memphis' Center for Applied Earth Science and Engineering Research (CAESAR). Groundwater fills the Memphis Aquifer and the other aquifers that supply Memphis. MLGW pulls water from the aquifers, sends it through an aerator and treats it to meet drinking water standards. Specialists in MLGW's Water Laboratory perform approximately 40,000 tests throughout the year to monitor components of Memphis' water.

All community water systems are required to prepare and distribute an annual water quality report. Read vital facts about the source and quality of your drinking water at www.mlgw.com/waterquality. Printed copies of the report are available by calling 901-320-3950 or emailing corpcomm@mlgw.org.



Memphis Water Quality Report 2022

No water, no life. A simple, factual statement from marine biologist Sylvia Earle. Our survival depends on clean, drinkable water. It is a precious resource.

Groundwater

Memphis is the largest city in the country that relies 100% on groundwater, according to the University of Memphis' Center for Applied Earth Science and Engineering Research (CAESAR).

Groundwater fills the Memphis Aquifer and the other aquifers that supply Memphis. Memphis Light, Gas and Water pulls water from the aquifers, sends it through an aerator, and treats it so it meets drinking water standards.

Memphians are blessed with water so pure it requires little treatment. We must all do our part to protect it. The Groundwater Foundation lists ways to keep our groundwater free from contamination:

- Plant native plants. They are naturally adapted to grow here so they require less watering and fewer chemical treatments to thrive.
- Dispose of waste correctly. Do not pour hazardous products like paint, cleaners, or motor oil down drains or into the street. That goes for prescription drugs too.
- Do not flush prescriptions down the toilet or pour prescription medicine down a drain. The chemicals can pollute our groundwater.

Find ways to conserve water at mlgw.com/watertips.

Drinking water, including bottled water, may reasonably be expected to contain at least small amounts of some contaminants. The presence of contaminants does not necessarily pose a health risk. More information about contaminants and potential health effects can be obtained by calling the Environmental Protection Agency's Safe Drinking Water Hotline at 800-426-4791. Sources: EPA and Tennessee Department of Environment and Conservation

Energy Edge is published by the Business Solutions department at Memphis Light, Gas and Water Division. Comments and distribution list changes may be e-mailed to: mlgwbsc@mlgw.org