



Energy Edge

A NEWSLETTER FOR MEMPHIS LIGHT, GAS AND WATER DIVISION KEY ACCOUNT CUSTOMERS
NOVEMBER 2016

CHANGE EFFECTIVE 12/1/2016

TVA alters incentive criteria for Energy Right Solutions for Business

In its ongoing efforts to maintain program funding year-round, TVA has announced a change in eligibility criteria for the Energy Right Solutions for Business/Industry (ERSBI) program. Effective 12/1/2016, eligible projects must have a payback of at least two years to qualify for incentives.

Since many businesses consider projects with a two-year payback to be easily adopted “low hanging fruit,” this change enables program funds to be directed at technologies and improvements with higher implementation costs, where the incentive truly influences the decision.

In addition, TVA has announced that starting with its next fiscal year, which begins 10/1/2017, all projects must utilize a trained member of the Preferred Providers Network (PPN). This requirement already exists for lighting projects, which represent 90% of all submittals. The PPN member can be a supplier or the installer, which continues to give customers the option to self-install upgrades.

For information about Energy Right Solutions for Business and Industry, visit www.energyright.com

Learn how to lower utility costs, enhance operations and maintenance with Business Energy Advisor portal

Do you need help figuring out the most energy-efficient equipment to purchase for your facility? Want to know what energy-saving opportunities are best for your type of business? Wish you knew how to maintain equipment for optimal operation? Business Energy Advisor, our robust library of information, will satisfy all of these needs—and it’s accessible from your computer, tablet or smart phone browser. Check it out at <https://mlgw.bizenergyadvisor.com/>

These sections recently were updated:

Updated Guide to Buying Smart Power Strips

“Smart” or “advanced” power strips offer a simple way to garner

MLGW Rates

MLGW’s current and historic electric, natural gas and water rates are published at www.mlgw.com, along with updated Purchased Gas Adjustment and Fuel Cost Adjustment rates.

Purchased Gas Adjustment (PGA)

MLGW Rate	Consumption	Demand
G-1 residential	\$0.039	na
G-7	\$0.023	na
G-8 / G-9	(\$0.023)	\$0.214
G-10 / G-12	(\$0.010)	na

Monthly adjustment in \$/Ccf to published natural gas rates for meters read on or after 10/31/2016.

Fuel Cost Adjustment (FCA)

TVA Rate Class	MLGW Rate Code	FCA Amount
GSA, Part 1	E-2	\$0.02063
GSA, Part 2	E-2	\$0.02059
GSA, Part 3	E-2	\$0.02038
Residential	E-1	\$0.02089
Outdoor Lighting	E-3	\$0.02279

Monthly adjustment in \$/kWh to all firm kWh, beginning with meters read on or after 10/31/2016.



Important Contact Information

John Harris, C.E.M.

Strategic Marketing Coordinator

Office: 901-528-4177

Cellular: 901-491-5093

Fax: 901-528-7766

E-mail: jharris@mlgw.org

Commercial Resource Center:

Phone: 901-528-4270

Fax: 901-528-4547

E-mail: mlgwbsc@mlgw.org

Emergency: 901-528-4465

Outage: 901-544-6500

VIEW YOUR BILL ONLINE AT www.mlgw.com

significant savings, often resulting in simple payback periods of less than two years. This article reveals how best to use and apply these strips and optimize your plug load control strategy so that you can truly maximize the savings potential these advanced strips offer. Read details at:

https://mlgw.bizenergyadvisor.com/BEA1/PA/PA_OfficeEquipment/PA-03

Updated Guide to Buying and Upgrading Elevators

Recent advances in elevator technology, such as destination dispatch controls and regenerative braking, have made major gains in efficiency. This article explores the various options you'll face when choosing or upgrading an elevator. Check it out at: https://mlgw.bizenergyadvisor.com/BEA1/PA/PA_ElevatorsEscalators/PA-57

Updated Guide to Buying Ice Makers

Ice-making machines are used in restaurants, grocery stores, hotels, hospitals, and many other commercial facilities. When focusing on energy efficiency, there are a range of specific types and technologies from which to choose. Not only do Energy Star and the Consortium for Energy Efficiency offer qualifications for ice-maker efficiency, but new federal efficiency standards are coming into effect in January, 2018, that will help to improve efficiency of all new ice makers. Find more at: https://mlgw.bizenergyadvisor.com/BEA1/PA/PA_Refrigeration/PA-31

Energy tips to cut operating costs this holiday season

Many companies close their operations over the holidays, resulting in energy- saving opportunities if you take a little time to plan ahead. Others find their operating hours extended to serve celebrating crowds. Here are some ideas to assist you in reducing energy use in the midst of autumn festivities.

Tips for facilities CLOSED for the holiday

- Encourage employees to turn off desk lamps and power down computers, monitors, speakers, printers and copiers before they leave. Controlling these plug loads can deliver sizable savings every day, but especially during extended periods when your business is closed.
- Turn off lighting in break rooms, conference rooms and restrooms.
- Adjust heating systems to minimize operation during vacant hours and make sure personal space heaters are turned off.
- Close your window blinds to slow heat loss.
- Reduce the temperature on your water heater.
- Email tips to staff as a reminder of easy steps they can take to contribute to your organization's profitability. (Feel free to copy and paste our ideas into your message.)

Tips for facilities OPEN LONGER for the holiday

- Make sure your interior and exterior lighting systems are adjusted to reflect longer operating hours, including cleaning and stocking time, but remember to reduce to minimum needs when the building is vacant.
- Heating and water heating systems need to operate during your extended hours, but usually don't require consistent temperatures overnight so adjust your systems' setback times or make changes manually.
- Retailers, restaurants and other businesses and organizations that extend their hours during the holiday season also are likely to have holiday décor. Consider turning off festive lights, fans for inflatable characters and other energy-consuming decorations when you close each night.



MLGW IN THE COMMUNITY



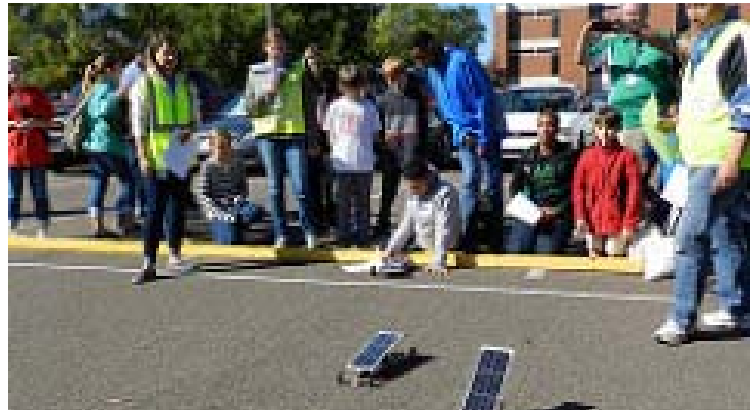
A-Blazing Race encourages students to build solar-powered vehicles

The A-Blazing Race took place 10/21/2016 at the University of Memphis Herff College of Engineering as part of Engineering Day (E-Day). The goal of the annual race is to engage youth in grades 6 through 12 in the design and construction of model solar cars.

MLGW provided each team with a kit containing a solar panel, battery holder and motor to build their solar powered vehicle. The model cars competed to determine which vehicle ran the 20-meter course in the shortest possible time using available power.

Seventeen middle school teams (grades 6-8) competed in the morning, where MLGW President Jerry Collins presented awards. Eighteen high school teams (grades 9-12) raced in the afternoon, with awards presented by Alonzo Weaver, MLGW Vice President of Engineering and Operations. Approximately 30 MLGW employees volunteered with setup, registration, announcing and judging at this exciting, educational Saturday event.

Read about the winning teams at: <http://mlgw.blogspot.com/2016/11/the-blazing-race-winners.html>



Students watch from the starting line as their solar-powered vehicles speed off during the A-Blazing Race competition on 10/21/2016. MLGW provided the solar panel, battery holder and motor for each team to build their vehicle, sparking imaginative designs through science, technology, engineering and math principles.

Energy Edge is published by the Commercial & Industrial Customer Care department of Memphis Light, Gas and Water Division. Comments and distribution list changes may be e-mailed to: jharris@mlgw.org